

Modular Workshop Equipment System

VALID FROM 01.05.2023 - 31.01.2024



Art. 3964K-45S0 | 3964K-45S0IX

KRAFTWERK MOBILIO 3-element combi standard

- 1 Floor Cabinet, 4 drawers
- 1 Floor Cabinet, 5 drawers
- 1 Floor Cabinet, 2 doors, 1 shelf
- 1 Beech Multiplex Worktop for 3 elements or instead
- 1 Stainless Steel Worktop for 3 elements

+ H 910 x W 2040 x D 458 mm



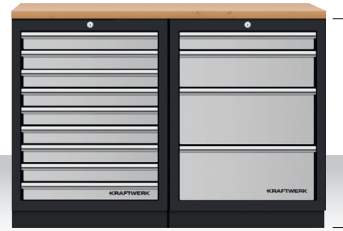
Art.	Worktop	Thickness	Price €	
3964K-45S0	Beech Multiplex	35 mm	1.342,-	2.040,-
3964K-45S0IX	Stainless Steel 430	38 mm	1.436,-	2.140,-

Configurated Elements | empty



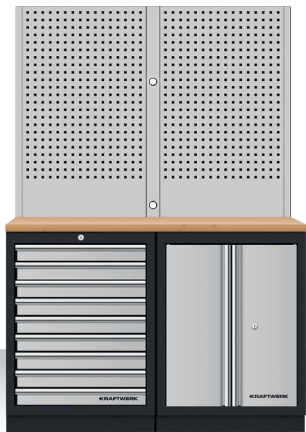
+ H 910 x W 1360 x D 458 mm

Art.	Worktop	Thickness	Price €	
3964K-S500	Beech Multiplex	35 mm	884,-	1.330,-
3964K-S500IX	Stainless Steel 430	38 mm	968,-	1.410,-



+ H 910 x W 1360 x D 458 mm

Art.	Worktop	Thickness	Price €	
3964K-940	Beech Multiplex	35 mm	1.039,-	1.580,-
3964K-940IX	Stainless Steel 430	38 mm	1.124,-	1.670,-



+ H 2000 x W 1360 x D 488 mm

Art.	Worktop	Thickness	Price €	
3964K-9S-W	Beech Multiplex	35 mm	1.134,-	1.660,-
3964K-9S-WIX	Stainless Steel 430	38 mm	1.228,-	1.730,-



+ H 2000 x W 1360 x D 488 mm

Art.	Worktop	Thickness	Price €	
3964K-S5-W	Beech Multiplex	35 mm	1.092,-	1.590,-
3964K-S5-WIX	Stainless Steel 430	38 mm	1.165,-	1.680,-



+ H 2000 x W 1360 x D 488 mm

Art.	Worktop	Thickness	Price €	
3964K-9S-K2	Beech Multiplex	35 mm	1.300,-	2.060,-
3964K-9S-K2IX	Stainless Steel 430	38 mm	1.342,-	2.140,-



+ H 2000 x W 1360 x D 488 mm

Art.	Worktop	Thickness	Price €	
3964K-95K2	Beech Multiplex	35 mm	1.404,-	2.290,-
3964K-95K2IX	Stainless Steel 430	38 mm	1.508,-	2.370,-



+ H 2000 x W1 894 x W2 894 x D 488 mm

Art.	Worktop		Price €	
3964K-ECK	Beech Multiplex	35 mm	1.124,-	1.730,-
3964K-ECKIX	Stainless Steel 430	38 mm	1.196,-	1.820,-



+ H 910 x W 2040 x D 458 mm

Art.	Worktop		Price €	
3964K-905	Beech Multiplex	35 mm	1.196,-	1.700,-
3964K-905IX	Stainless Steel 430	38 mm	1.342,-	1.800,-



+ H 910 x W 2040 x D 458 mm

Art.	Worktop	Thickness	Price €	
3964K-95M	Beech Multiplex	35 mm	1.508,-	2.250,-
3964K-95MIX	Stainless Steel 430	38 mm	1.592,-	2.340,-



+ H 910 x W 2040 x D 458 mm

Art.	Worktop	Thickness	Price €	
3964K-SR9	Beech Multiplex	35 mm	1.660,-	2.210,-
3964K-SR9IX	Stainless Steel 430	38 mm	1.760,-	2.290,-



+ H 910 x W 2040 x D 458 mm

Art.	Worktop	Thickness	Price €	
3964K-4R8	Beech Multiplex	35 mm	1.720,-	2.350,-
3964K-4R8IX	Stainless Steel 430	38 mm	1.800,-	2.430,-



+ H 2000 x W 2040 x D 488 mm

Art.	Worktop	Thickness	Price €	
3964K-80S-W	Beech Multiplex	35 mm	1.238,-	1.820,-
3964K-80S-WIX	Stainless Steel 430	38 mm	1.342,-	1.910,-

Configurated Elements | empty



+ H 2000 x W 2040 x D 488 mm

Art.	Worktop	Thickness	Price €	
3964K-85S-W	Beech Multiplex	35 mm	1.519,-	2.500,-
3964K-85S-WIX	Stainless Steel 430	38 mm	1.612,-	2.590,-



+ H 2000 x W 2040 x D 488 mm

Art.	Worktop	Thickness	Price €	
3964K-87S-W	Beech Multiplex	35 mm	1.720,-	2.540,-
3964K-87S-WIX	Stainless Steel 430	38 mm	1.820,-	2.640,-



+ H 2000 x W 2040 x D 488 mm

Art.	Worktop	Thickness	Price €	
3964K-85S-K3	Beech Multiplex	35 mm	1.850,-	3.100,-
3964K-85S-K3IX	Stainless Steel 430	38 mm	1.940,-	3.200,-



+ H 2000 x W 1960 x D 488 mm

Art.	Worktop	Thickness	Price €	
3964A	Beech Multiplex	35 mm	1.660,-	2.370,-
3964AIX	Stainless Steel 430	38 mm	1.760,-	2.510,-



+ H 2000 x W 2275 x D 458 mm

Art.	Worktop	Thickness	Price €	
3964K-H25S	Beech Multiplex	35 mm	1.612,-	2.310,-
3964K-H25SIX	Stainless Steel 430	38 mm	1.720,-	2.370,-



+ H 910 x W 2720 x D 458 mm

Art.	Worktop	Thickness	Price €	
3964K-854S	Beech Multiplex	35 mm	1.970,-	2.880,-
3964K-854SIX	Stainless Steel 430	38 mm	2.070,-	2.980,-



+ H 2000 x W 2640 x D 488 mm

Art.	Worktop	Thickness	Price €	
3964K-H5R4-K1W	Beech Multiplex	35 mm	2.390,-	3.690,-
3964K-H5R4-K1WIX	Stainless Steel 430	38 mm	2.490,-	3.790,-



+ H 2000 x W 2640 x D 458 mm

Art.	Worktop	Thickness	Price €	
3964K-H504	Beech Multiplex	35 mm	1.612,-	2.340,-
3964K-H504IX	Stainless Steel 430	38 mm	1.660,-	2.420,-



+ H 2000 x W 2720 x D 488 mm

Art.	Worktop	Thickness	Price €	
3964K-S854-K4	Beech Multiplex	35 mm	2.390,-	4.190,-
3964K-S854-K4IX	Stainless Steel 430	38 mm	2.490,-	4.330,-



+ H 2000 x W 2640 x D 488 mm

Art.	Worktop	Thickness	Price €	
3964B	Beech Multiplex	35 mm	2.280,-	3.260,-
3964BIX	Stainless Steel 430	38 mm	2.390,-	3.390,-



+ H 2000 x W 2955 x D 488 mm

Art.	Worktop	Thickness	Price €	
3964D	Beech Multiplex	35 mm	2.660,-	3.710,-
3964DIX	Stainless Steel 430	38 mm	2.760,-	3.830,-



+ H 2000 x W 2955 x D 488 mm

Art.	Worktop	Thickness	Price €	
3964G	Beech Multiplex	35 mm	2.490,-	3.390,-
3964GIX	Stainless Steel 430	38 mm	2.590,-	3.490,-

Configurated Elements | empty



+ H 2000 x W 3320 x D 488 mm

Art.	Worktop	Thickness	Price €
3964K-H5049-K4	Beech Multiplex	35 mm	2.700,- 4.560,-
3964K-H5049-K4IX	Stainless Steel 430	38 mm	2.770,- 4.710,-



+ H 2000 x W 3635 x D 488 mm

Art.	Worktop	Thickness	Price €
3964H	Beech Multiplex	35 mm	2.910,- 3.860,-
3964HIX	Stainless Steel 430	38 mm	3.010,- 3.930,-



+ H 2000 x W 3920 x D 488 mm

Art.	Worktop	Thickness	Price €
3964K-H5745H-K4	Beech Multiplex	35 mm	3.110,- 5.760,-
3964K-H5745H-K4IX	Stainless Steel 430	38 mm	3.280,- 5.910,-



+ H 2000 x W 3920 x D 488 mm

Art.	Worktop	Thickness	Price €
3964F	Beech Multiplex	35 mm	3.440,- 5.000,-
3964FIX	Stainless Steel 430	38 mm	3.700,- 5.120,-



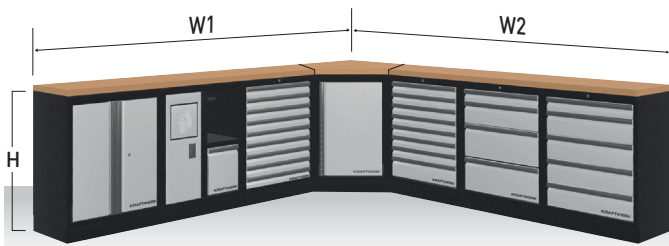
+ H 2000 x W 3920 x D 488 mm

Art.	Worktop	Thickness	Price €
3964C	Beech Multiplex	35 mm	3.330,- 4.900,-
3964CIX	Stainless Steel 430	38 mm	3.440,- 5.120,-



+ H 2000 x W 4235 x D 488 mm

Art.	Worktop	Thickness	Price €
3964K-H284S5H-K4	Beech Multiplex	35 mm	3.700,- 5.990,-
3964K-H284S5H-K4IX	Stainless Steel 430	38 mm	3.800,- 6.140,-



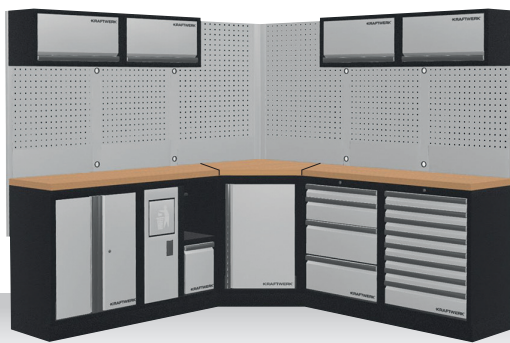
+ H 910 x W1 2934 x W2 2934 x D 488 mm

Art.	Worktop	Thickness	Price €	
3964M	Beech Multiplex	35 mm	3.530,-	5.200,-
3964MIX	Stainless Steel 430	38 mm	3.630,-	5.410,-



+ H 2000 x W1 2254 x W2 1574 x D 488 mm

Art.	Worktop	Thickness	Price €	
3964N	Beech Multiplex	35 mm	3.010,-	4.850,-
3964NIX	Stainless Steel 430	38 mm	3.110,-	5.060,-



+ H 2000 x W1 2254 x W2 2254 x D 488 mm

Art.	Worktop	Thickness	Price €	
39640	Beech Multiplex	35 mm	3.420,-	5.390,-
39640IX	Stainless Steel 430	38 mm	3.530,-	5.590,-



+ H 2000 x W1 3534 x W2 2254 x D 488 mm

Art.	Worktop	Thickness	Price €	
3964P	Beech Multiplex	35 mm	4.660,-	7.360,-
3964PIX	Stainless Steel 430	38 mm	4.780,-	7.630,-



+ H 2000 x W1 3849 x W2 2824 x D 488 mm

Art.	Worktop	Thickness	Price €	
3964E	Beech Multiplex	35 mm	5.200,-	7.360,-
3964EIX	Stainless Steel 430	38 mm	5.460,-	7.560,-





Configurated Elements | empty



+ H 2000 x W 5910 x D 488 mm

Art.	Worktop	Thickness	Price €	
3964Q	Beech Multiplex	35 mm	4.990,-	7.900,-
3964QIX	Stainless Steel 430	38 mm	5.120,-	8.090,-



+ H 2000 x W 3635 x D 488 mm

Art.	Worktop	Thickness	Price €	
3964DIX-SANA	Stainless Steel 430	38 mm	3.950,-	5.470,-



Worktops



Beech Multiplex

- Made of several layers of peeled veneers (connected with an adhesive)
- Veneers are laid crosswise
- Material: beech wood
- High strength & dimensional stability
- Natural look

Stainless Steel 430

- Density: 7.70 g/cm³
- Ferritic steel
- Chromium content of 17%
- Good corrosion resistance
- Good polishability
- Good resistance to water, water vapour, humidity
- Good resistance to weak acids and alkalis

Material * Material and prices on request	463 x 680 mm for 1 Element	463 x 1361 mm for 2 Elements	463 x 2041 mm for 3 Elements	463 x 864 mm for Corner Cabinet 3964-16	Thickness mm
Beech Multiplex	Art. 3964-08 118,-	Art. 3964-09 221,-	Art. 3964-18 292,-	Art. 3964-16-99 221,-	35
Stainless Steel 430	Art. 3964-20 169,-	Art. 3964-21 293,-	Art. 3964-22 387,-	Art. 3964-23 310,-	38

Modular Workshop Elements | empty

To be assembled according to your own needs. Free-standing construction, no fixings necessary and therefore very flexible to set up. Each module can be ordered individually. Drawers with ball bearings in various heights, suitable for all KRAFTWERK tool inserts (COMPLETO hard trays, EVA, EVA3) with central locking and individually lockable.

With our One-Key solution, it is possible to retrofit all locks with the same lock number so that only one key is needed.

Wide range of accessories to match the rear panels with square holes for professional tool storage. Various models can be selected as worktops, depending on the area of application: Beech multiplex/wood | Stainless steel 430 (on request).

Drawer dimensions from:

- 3964-04 (2C+1B+1A)
- 3964-05 (4B+1A)
- 3964-13 (9A)
- 3964-14 (7A+1B)
- 3964-15 (6A+1B)
- 3964-28 (1A+1C)

	L1 (mm)	L2 (mm)	L3 (mm)
A	560	404	58
B	560	404	138
C	560	404	207

Floor Cabinet, 2 doors, 1 shelf included

Art.	Dimension Weight	Price €
3964-03	H 910 x W 680 x D 458 mm ⚖ 29.4 kg	439,-

Floor Cabinet, 4 ball-bearing drawers with full extension

Art.	Dimension Weight	Price €
3964-04	H 910 x W 680 x D 458 mm ⚖ 46.7 kg	630,-

Floor Cabinet, 5 ball-bearing drawers with full extension

Art.	Dimension Weight	Price €
3964-05	H 910 x W 680 x D 458 mm ⚖ 49.3 kg	674,-

Multifunction Floor Cabinet, with waste bin and cleaning roll holder

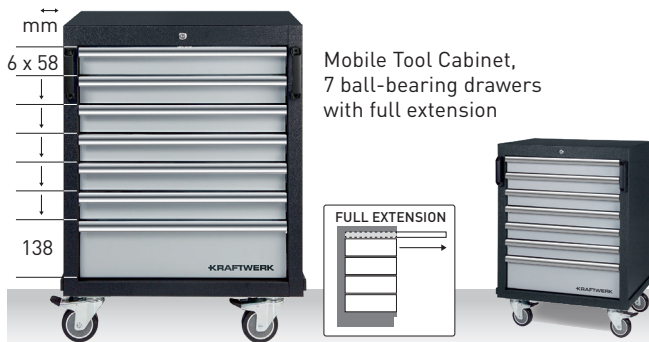
Art.	Dimension Weight	Price €
3964-11	H 910 x W 680 x D 458 mm ⚖ 37 kg	541,-

Floor Cabinet, 9 ball-bearing drawers with full extension

Art.	Dimension Weight	Price €
3964-13	H 910 x W 680 x D 458 mm ⚖ 55 kg	732,-

Floor Cabinet, 8 ball-bearing drawers with full extension

Art.	Dimension Weight	Price €
3964-14	H 910 x W 680 x D 458 mm ⚖ 52.5 kg	687,-



Mobile Tool Cabinet,
7 ball-bearing drawers
with full extension

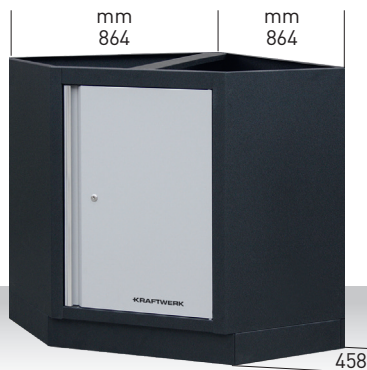
Art.	Dimension Weight	Price €
3964-15	H 646 x W 862 x D 458 mm ⚖ 51 kg	732,-



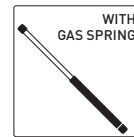
Floor Cabinet, for cable and hose
reels, 2 ball-bearing drawers with
full extension

Art.	Dimension Weight	Price €
3964-28	H 910 x W 680 x D 458 mm ⚖ 40 kg	590,-

Floor Cabinet,
1 door,
1 shelf included



Corner Wall Cabinet,
1 door, with gas struts



Art.	Dimension Weight	Price €
3964-25	H 350 x W 865 x D 281 mm ⚖ 21 kg	439,-

Corner Wall Cabinet,
1 door, with gas struts



Art.	Dimension Weight	Price €
3964-01	H 350 x W 680 x D 281 mm ⚖ 10 kg	204,-

Wall Cabinet, 2 doors,
1 shelf included



Wall Cabinet
Tambour Front



Art.	Dimension Weight	Price €
3964-27	H 680 x W 680 x D 300 mm ⚖ 16 kg	281,-

Art.	Dimension Weight	Price €
3964-19	H 350 x W 680 x D 281 mm ⚖ 8.4 kg	164,-

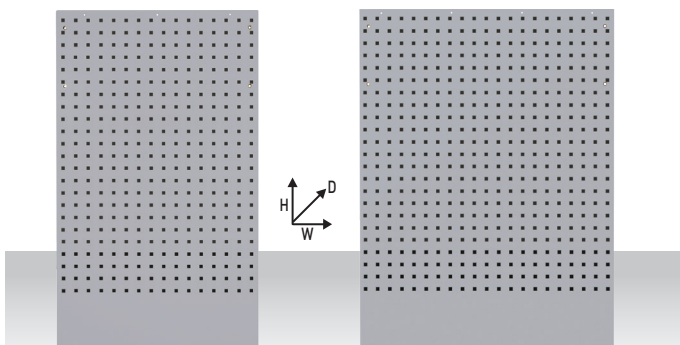


Art.	Dimension Weight	Price €
3964-02	H 2000 x W 600 x D 458 mm ⚖ 53 kg	734,-
3964-02-07	H 20 x W 590 x D 430 mm ⚖ 0.30 kg	37,-



Art.	Dimension Weight	Price €
3964-12	H 2000 x W 915 x D 458 mm ⚖ 74 kg	966,-
3964-02-01	H 20 x W 905 x D 430 mm ⚖ 0.60 kg	57,-

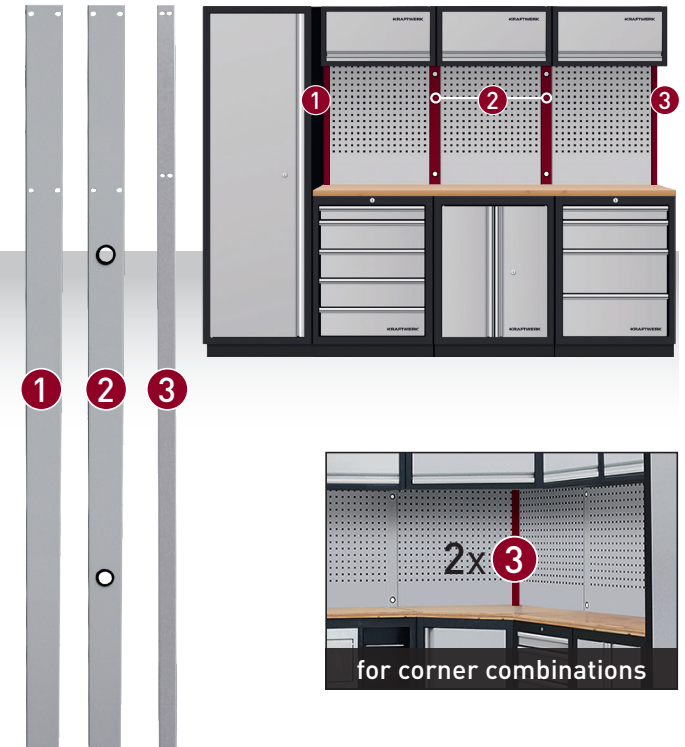
Modular Workshop Elements



Art.	Dimension Weight	Price €
3964-29	H 1052 x W 615 x D 24 mm ⚖ 5.3 kg	90,-
3964-30	H 1052 x W 800 x D 24 mm ⚖ 6.7 kg	95,-

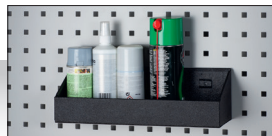


Art.	Description	Price €
3964-03-07	One-Key-Solution (lock 90°) for Art. 3964-02 3964-03 3964-12 3964-16 3964-27	6,40
3964-04-10	One-Key-Solution (lock 180°) for Art. 3964-04 3964-05 3964-13 3964-14 3964-15 3964-28	6,40



Art.	Description Dimension	Price €
3964-24 ①	MOBILIO Upright Connector for 2 Elements, H 1420 x W 65 x D 30 mm	47,70
3964-07 ②	MOBILIO Upright Connector for 2 Elements, with cable holes H 1420 x W 65 x D 30 mm	47,70
3964-10 ③	MOBILIO Single Upright Connector H 1420 x W 32.5 x D 30 mm	18,10

Accessories for hanging panel



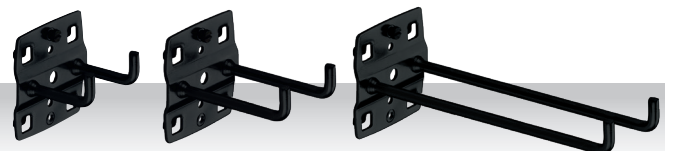
Art.	Description Dimension	Price €
3964-29-01	Storage Tray for Cans H 100 x W 330 x D 100 mm	28,70



Art.	Description Dimension	Price €
145.111.035	Single Tool Hook, vertical end 35 mm	2,10 3,70
145.111.070	Single Tool Hook, vertical end 70 mm	2,40 3,70
145.111.135	Single Tool Hook, vertical end 135 mm	3,40 4,10

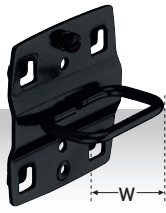


Art.	Description Dimension	Price €
3964-29-11	Bracket for Plastic Box H 54 x W 440 x D 15.5 mm	6,40

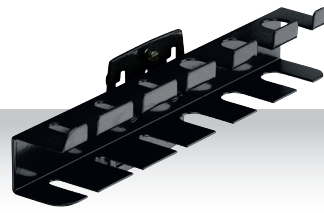


Art.	Description Dimension	Price €
3964-29-14	Plastic Box Blue H 75 x W 105 x D 140 mm	7,20
3964-29-15	Plastic Box Blue H 125 x W 140 x D 220 mm	16,80
3964-29-16	Plastic Box Blue H 125 x W 140 x D 270 mm	18,90

Art.	Description Dimension	Price €
145.112.035	Double Tool Hook, vertical end 35 mm	3,40 6,20
145.112.050	Double Tool Hook, vertical end 50 mm	3,40 6,20
145.112.075	Double Tool Hook, vertical end 75 mm	3,50 6,20
145.112.150	Double Tool Hook, vertical end 150 mm	3,50 8,90



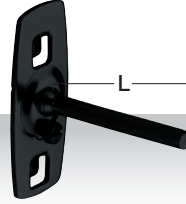
Art.	Description Dimension	Price €	
145.125.035	Pliers Pliers Tool Hook, W 35 x D 20 mm ⌀ 62 g	3,50	6,20
145.125.075	Pliers Pliers Tool Hook, W 75 x D 20 mm ⌀ 62 g	3,60	7,20



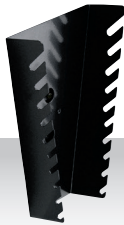
Art.	Description Dimension	Price €	
145.129.200	Holder for 6 Screwdrivers W 200 x D 30 mm ⌀ 200 g	6,80	20,70
145.129.390	Holder for 12 Screwdrivers W 390 x D 30 mm ⌀ 400 g	9,80	29,20



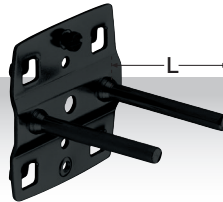
Art.	Description Dimension	Price €	
145.126.060	Machine Tool Hook, Ø 60 mm ⌀ 72 g	4,80	15,50
145.126.080	Machine Tool Hook, Ø 80 mm ⌀ 80 g	5,60	16,60



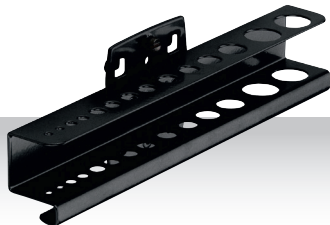
Art.	Description Dimension	Price €	
145.100.050	Tool Hook, straight mandrial end L 50 mm Ø 6 mm ⌀ 34 g	1,90	2,30
145.100.102	Tool Hook, straight mandrial end L 102 mm Ø 6 mm ⌀ 46 g	2,60	3,10
145.100.150	Tool Hook, straight mandrial end L 150 mm Ø 6 mm ⌀ 56 g	3,10	3,80



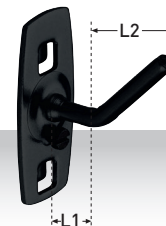
Art.	Description Dimension	Price €	
145.129.227	Wrench Holder for 10 Spanners H 75-145 x D 220 mm ⌀ 480 g	13,90	29,20



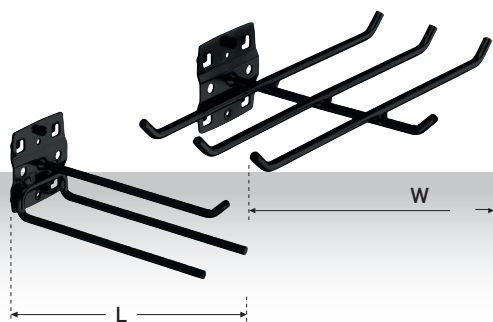
Art.	Description Dimension	Price €	
145.110.050	Double Hook, straight mandrial end L 50 mm Ø 6 mm ⌀ 74 g	3,40	5,20
145.110.102	Double Hook, straight mandrial end L 102 mm Ø 6 mm ⌀ 98 g	3,50	6,30
145.110.150	Double Hook, straight mandrial end L 150 mm Ø 6 mm ⌀ 118 g	3,50	6,30



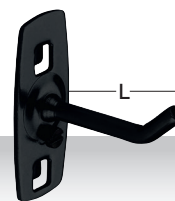
Art.	Description Dimension	Price €	
145.130.200	Holder for 14 Drills each 2x Ø 3.0-4.2-6.5-7.5-8.5-16.5 mm each 1x Ø 10.5-12.5 mm W 200 x D 28 mm ⌀ 200 g	6,90	20,70
145.130.390	Holder for 28 Drills each 4x Ø 3.2-4.2-6.5-7.5-8.5-16.5 mm each 2x Ø 10.5-12.5 mm W 390 x D 28 mm ⌀ 400 g	12,90	36,40



Art.	Description Dimension	Price €	
145.121.040	Inclined hook L1 15 x L2 35 mm Ø 6 mm ⌀ 34 g	2,10	4,10



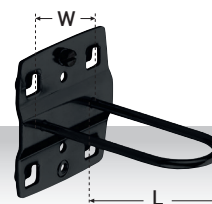
Art.	Description Dimension	Price €	
145.113.045	Triple Tool Hook, 3-fold W 45 x L 150 mm Ø 6 mm ⚡ 170 g	5,50	14,50
145.113.140	Triple Tool Hook, 6-fold W 240 x L 140 mm Ø 6 mm ⚡ 256 g	8,50	30,20



Art.	Description Dimension	Price €	
145.120.050	Tool hook, inclined end L 50 mm Ø 6 mm ⚡ 34 g	2,10	3,70
145.120.100	Tool hook, inclined end L 100 mm Ø 6 mm ⚡ 46 g	2,90	4,10
145.120.150	Tool hook, inclined end L 150 mm Ø 6 mm ⚡ 56 g	3,40	4,10
145.120.200	Tool hook, inclined end L 200 mm Ø 6 mm ⚡ 68 g	3,50	4,70



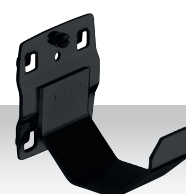
Art.	Description Dimension	Price €	
145.123.025	Large tool clamp L 25 mm Ø 25 mm ⚡ 58 g	3,50	8,30
145.123.028	Large tool clamp L 28 mm Ø 28 mm ⚡ 60 g	3,50	9,30
145.123.032	Large tool clamp L 32 mm Ø 23 mm ⚡ 64 g	3,50	10,30



Art.	Description Dimension	Price €	
145.124.027	Round Holder W 27 x L 65 mm ⚡ 68 g	2,90	8,30

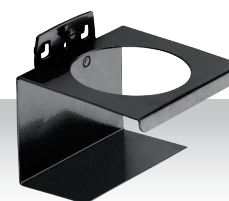


Art.	Description Dimension	Price €	
145.122.006	Small tool clamp Ø 6 mm ⚡ 24 g	3,50	4,70
145.122.010	Small tool clamp Ø 10 mm ⚡ 25 g	3,50	5,10
145.122.013	Small tool clamp Ø 13 mm ⚡ 26 g	3,50	5,10
145.122.016	Small tool clamp Ø 16 mm ⚡ 27 g	3,50	5,10
145.122.019	Small tool clamp Ø 19 mm ⚡ 28 g	3,50	5,10

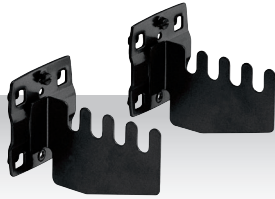


» Please order in pairs

Art.	Description Dimension	Price €	
145.127.060	Pipe Holder W 35 mm Ø 60 mm ⚡ 114 g	4,80	15,50
145.127.100	Pipe Holder W 35 mm Ø 100 mm ⚡ 156 g	5,60	16,60

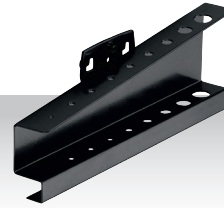


Art.	Description Dimension	Price €	
145.137.001	Round Tool Holder W 100 mm Ø 70 mm ⚡ 200 g	6,90	25,-

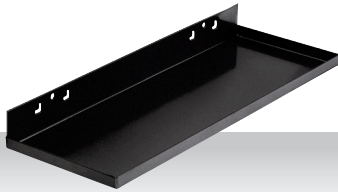


» Please order in pairs

Art.	Description Dimension	Price €	
145.128.080	Saw Holder for 4 Saws W 52 x D 80 mm ⚖ 85 g	3,50	14,50



Art.	Description Dimension	Price €	
145.131.200	Hexagon Wrench Holder, for 9 Hexagon L-Key Wrenches W 200 x D 73 mm ⚖ 220 g	7,90	26,-



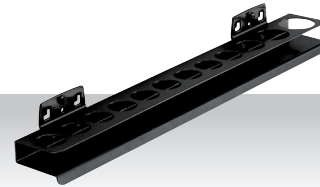
Art.	Description Dimension	Price €	
145.138.350	Storage Plate W 350 x D 125 mm ⚖ 600 g	9,90	25,-
145.138.445	Storage Plate W 445 x D 150 mm ⚖ 900 g	12,50	35,-



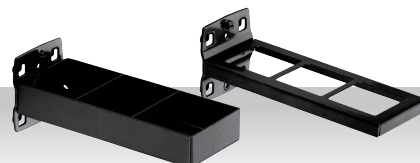
Art.	Description Dimension	Price €	
145.132.150	Screwdriver Bit Holder for 7 Bits W 150 x D 35 mm ⚖ 200 g	4,40	20,70



Art.	Description Dimension	Price €	
198.005.102	Universal Container for hanging panel, 5 pcs. H 90 x W 75 x D 50 mm	19,80	38,20



Art.	Description Dimension	Price €	
145.133.390	Socket Holder for 12 Sockets W 390 x D 30 mm ⚖ 500 g	12,90	36,40



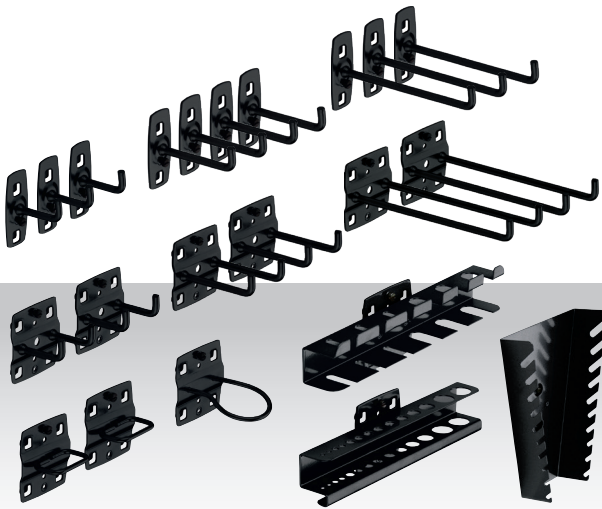
Art.	Description Dimension	Price €	
145.135.150	Combination Holder 2 pcs. W 60 x L 150 mm ⚖ 400 g	11,90	50,-



Art.	Description Dimension	Price €
145.134.340	Tool Holder W 325 x H 55 x D 135 mm ⚖ 1100 g	29,- 43,70



Art.	Description Dimension	Price €
145.100.800	Feet for Mobilio M10 (4 pcs in 1 bag)	23,-



Art.	Description Dimension	Price €
145.100.900	Tool Holder Set, 22 pcs.	55,- 74,30



Other accessories



LED Down Light

- Flexible use (magnet or U-Brackets)
- Connectable in series
- ON/OFF switch



Accessories incl.



Art.	Description Dimension Weight	Price €	
32077-60	20 W, 120 SMD, 1800 Lumens H 124 x W 590 x D 43 mm ⚖ 1.2 kg	114,-	148,-
32077-120	40 W, 240 SMD, 3600 Lumens H 124 x W 1200 x D 43 mm ⚖ 2.3 kg	172,-	196,-



Plastic Magnetic Bowl

- For holding different small parts
- Magnetic plate allows fixation trolleys, lifting tools etc.
- Plastic version

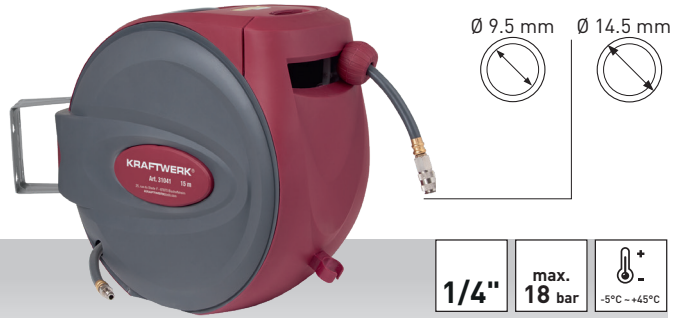
Art.	Dimension	Price €	
2949-1	∅ 150 mm, red	9,70	12,60
2949-2	∅ 150 mm, grey	9,70	12,60
2949-3	∅ 150 mm, green	9,70	12,60



Workbenches

- With height-adjustable feet
- 3 cm thick multiplex worktop, splash-proof, dirt-repellent and widely resistant to oil and grease
- Max. load-bearing capacity 150 kg

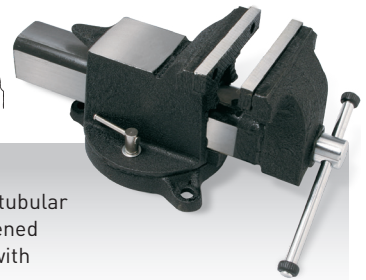
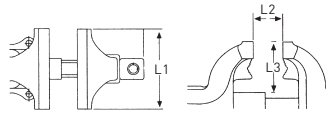
Art.	Dimension Weight	Price €
7526	H min. 880 - max. 930 x W 1600 x D 600 mm ⚖ 54 kg	381,-
7527	H min. 880 - max. 930 x W 1600 x D 800 mm ⚖ 66 kg	445,-



Automatic Air Horse Reel 15 + 1 m

- The housing can be swivelled up to 180°
- With automatic return spring and locking system
- Housing material: PP (Polypropylene)
- Reinforced hose made of hybrid polymer

Art.	Dimension Weight	Price €
31041	Fits for base cabinet 3964-28 (Page 17) H 370 x W 320 x D 180 mm ⚖ 5.5 kg	158,-



Parallel Steel Bench Vise

- drop forged, with swivel base and tubular clamping jaw, exchangeable hardened clamping jaws, forward opening, with anvil and beak, black enameled.
- Jaws, guideway and anvil grinded and hardened.

Art.	Dimension Weight	Price €
2961	L1 100 x L2 120 x L3 65 mm ⚖ 7.5 kg	158,-
2962	L1 125 x L2 140 x L3 70 mm ⚖ 11 kg	196,-
2963	L1 150 x L2 170 x L3 80 mm ⚖ 14.5 kg	232,-
2964	L1 200 x L2 200 x L3 90 mm ⚖ 20.5 kg	312,-

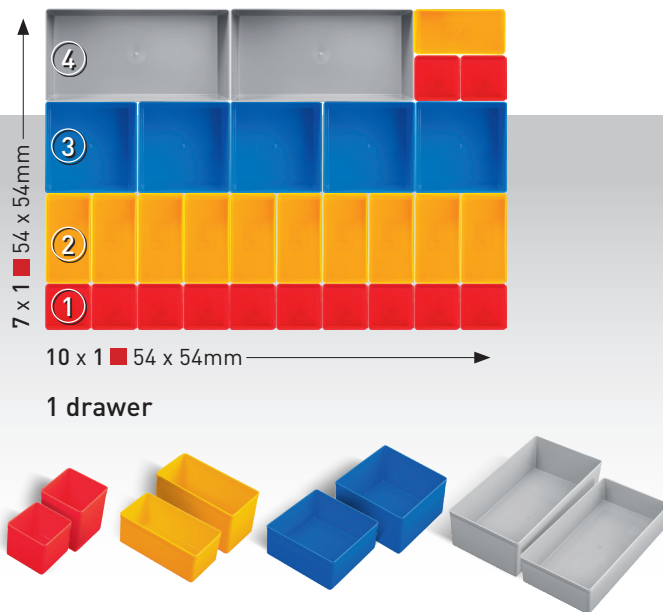


Magnetic Holder

- for sockets and pneumatic tools

Art.	Dimension Weight	Price €
3929	H 400 x W 130 x D 150 mm ⚖ 2.1 kg	89,-

Insert Bins



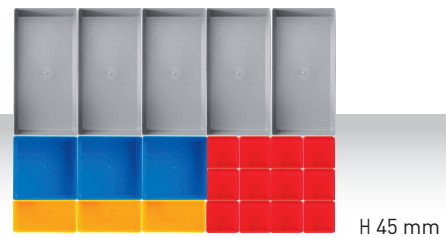
Art.	Description Dimension	Price €
198.000.018	Insert Bin, Nr. 1 H 45 x W 54 x D 54 mm	1,10
198.000.022	Insert Bin, Nr. 1 H 63 x W 54 x D 54 mm	1,40
198.000.019	Insert Bin, Nr. 2 H 45 x W 108 x D 54 mm	1,50
198.000.023	Insert Bin, Nr. 2 H 63 x W 108 x D 54 mm	1,90
198.000.020	Insert Bin, Nr. 3 H 45 x W 108 x D 108 mm	2,30
198.000.024	Insert Bin, Nr. 3 H 63 x W 108 x D 108 mm	2,80
198.000.021	Insert Bin, Nr. 4 H 45 x W 108 x D 216 mm	3,40
198.000.025	Insert Bin, Nr. 4 H 63 x W 108 x D 216 mm	4,60



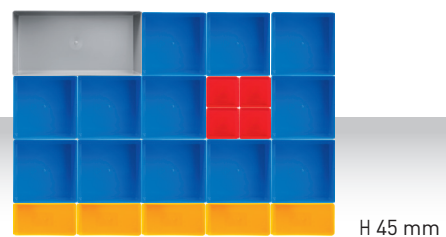
Art.	Description	Price €
198.001.001	Insert Bin Set, 30 pcs.	42,40



Art.	Description	Price €
198.001.002	Insert bin set, 21 pcs.	27,- 36,10



Art.	Description	Price €
198.001.003	Insert Bin Set, 23 pcs.	27,- 37,10



Art.	Description	Price €
198.001.004	Insert Bin Set, 22 pcs.	27,- 37,10

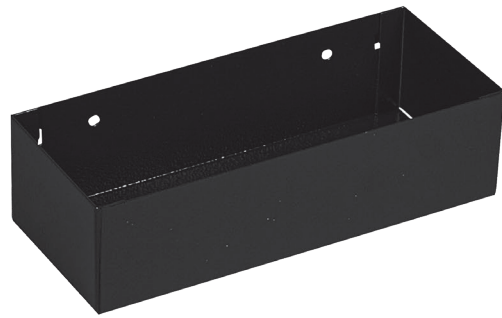


Art.	Description	Price €
198.001.005	Insert Bin Set, 26 pcs.	28,- 37,10

Accessories



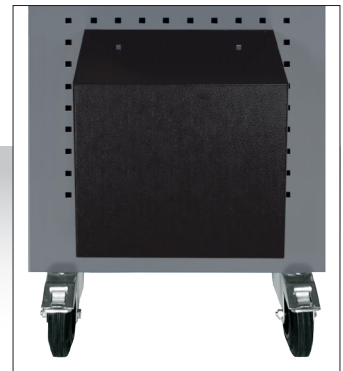
Art.	Description Dimension Weight	Price €	
145.143.010	Paper Roll Holder, H 150 x W 300 x D 220 mm ⚖ 1.6 kg	55,-	62,-



Art.	Description Dimension Weight	Price €	
145.143.011	Storage Compartment, H 60 x W 215 x D 85 mm ⚖ 0.5 kg	13.90	18.90



Art.	Description Dimension Weight	Price €	
145.143.012	Storage Compartment for 8 Cabs, with handle, H 100 x W 300 x D 160 mm ⚖ 2.5 kg	89,-	101,-



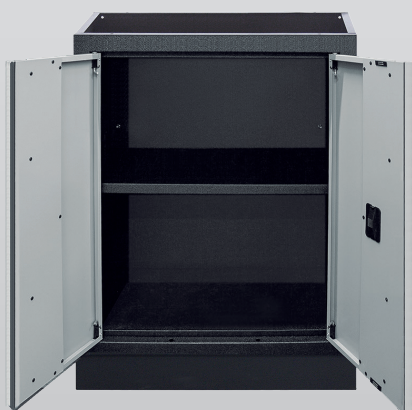
Art.	Description Dimension Weight	Price €	
145.143.013	Waste Paper Bin, H 300 x W 300 x D 160 mm ⚖ 3.5 kg	49,-	59,-

KRAFTWERK Sink Set

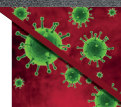
Art. 150.500.002

Floor Cabinet with Stainless Steel Sink, Waste Garbage and Back Panel

- 1 x Art. 150.000.011 Sink
- 1 x Art. 808.100.101 Sanitizer
- 1 x Art. 808.100.102 Soap Dispenser
- 1 x Art. 808.100.201 Paper Roll
- 1 x Art. 808.100.301 Stainless Steel Panel
L 24 x W 615 x H 1052 mm | ⚖ 5.3 kg
- 1 x Art. 3964-03 MOBILIO Floor Cabinet, 2 doors,
1 shelf included
- 2 x Art. 3964-10 MOBILIO Single Upright Connector



Maximize and expand your hygiene in the workshop



Wash trough and tap + soap dispenser + sanitizer + paper towel dispenser + 2 door tool cabinet



Compact and easy to install



Touch free to optimize your workplace



Fits perfectly in Kraftwerk Mobilio range



Cabinet for hygiene spare parts



€ 1.499,-

~~€ 2.580,-~~

Accessories for Mobilio Sink

Also available individually

Art. 808.100.102

Touch Free Soap Dispenser

- Infrared sensor activity for non-touch operation
- Stainless Steel, 0,8 mm
- Capacity 0,8 liter

H 300 x W 105 x D 106 mm | ⚖ 1.38 kg



€ 169,-

Art. 808.100.201

Centerfeed Paper Roll Box

- For paper rolls
- Stainless Steel, 0,8 mm
- Integrated tear- off edge for paper roll

H 339 x W 202 x D 215 mm | ⚖ 2.74 kg



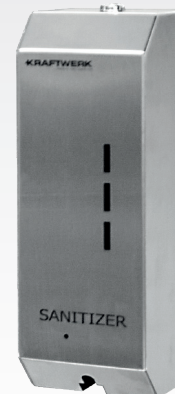
€ 169,-

Art. 808.100.101

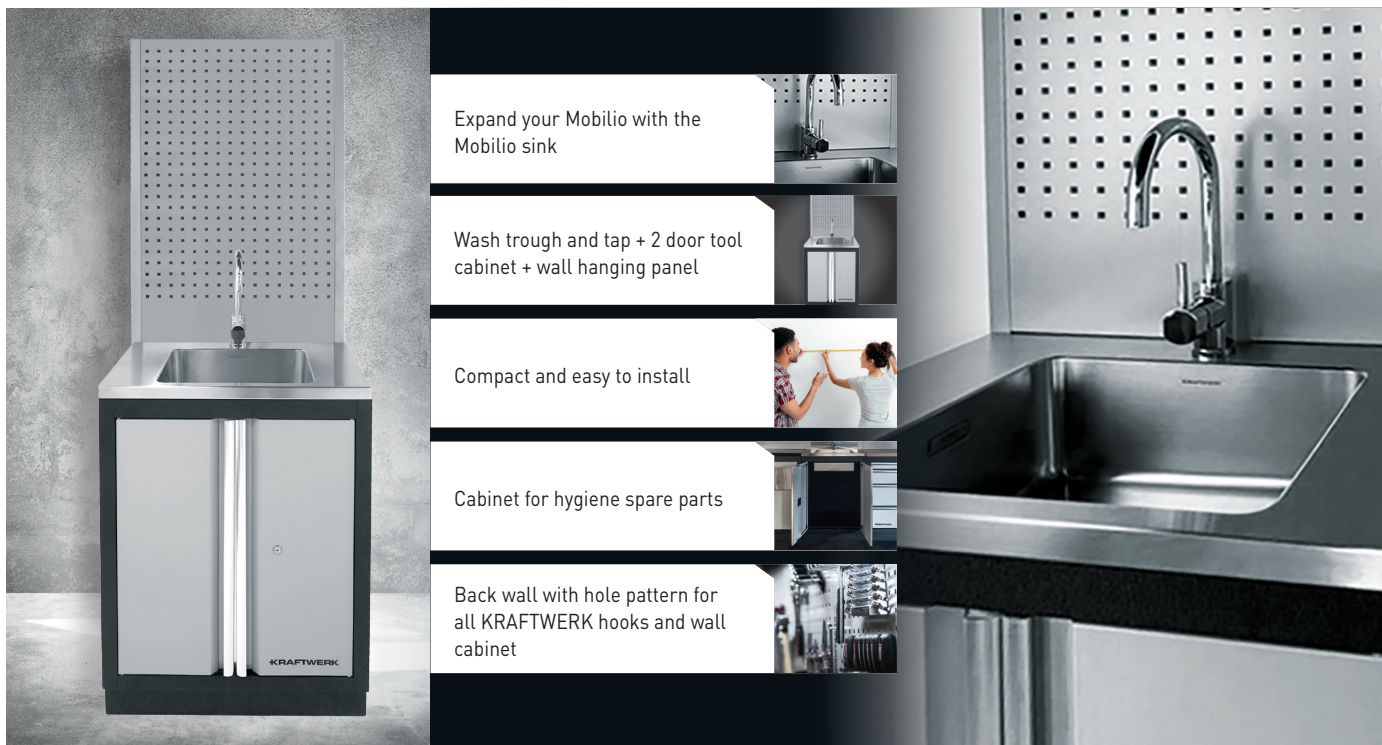
Touch Free Sanitizer Dispenser

- Infrared sensor activity for non-touch operation
- Stainless Steel, 0,8 mm
- Capacity 0,8 liter

H 300 x W 112 x D 105 mm | ⚖ 1.38 kg



€ 169,-



Expand your Mobilio with the Mobilio sink

Wash trough and tap + 2 door tool cabinet + wall hanging panel

Compact and easy to install

Cabinet for hygiene spare parts

Back wall with hole pattern for all KRAFTWERK hooks and wall cabinet

KRAFTWERK Sink Solution

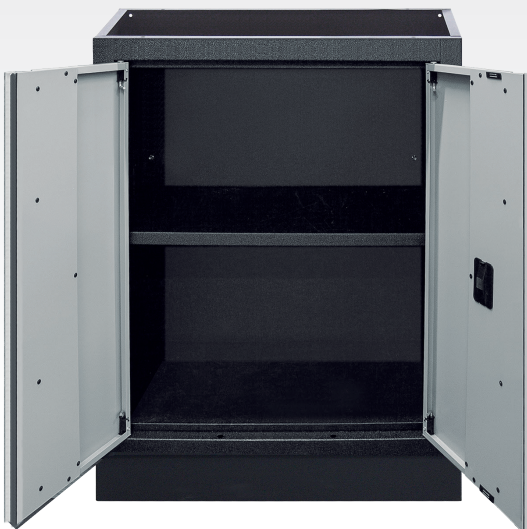
Art. 150.500.003

Floor Cabinet with Stainless Steel Sink

- 1 x Art. 150.000.011 Sink
- 1 x Art. 3964-29 Perforated Back Panel
H 1052 x W 615 x D 24 mm | ⚖ 5.3 kg
- 1 x Art. 3964-03 MOBILIO Floor Cabinet, 2 doors,
1 shelf included
- 2 x Art. 3964-10 MOBILIO Single Upright Connector

€ **999,-**

€ ~~1.520,-~~





MOBILIO WEB CONFIGURATOR



ACTUAL
HIGHEND 3D
MOBILIO WEB
CONFIGURATOR

Visit us on our homepage at mobilio-configurator.kraftwerktools.com

best of
swiss
web
usability
marketing
digital commerce
bronze 2019

MyKRAFTWERK INLAYS ACCORDING TO YOUR WISHES!

MyKRAFTWERK Inlays

KRAFTWERK offers you the possibility to equip and design your own tool insert made of coloured PE foam according to your wishes. Select the KRAFTWERK tools of your choice and simply define which tool should go in which insert. The drawing will then be sent to you with an approval for the design, including a quotation.



For more information, contact us at mykraftwerk@kraftwerktools.com

Subject to changes of specifications, prices and availability.

Valid from **01.01.2023 - 30.04.2023**

Prices in € excl. V.A.T.

Distribution: KRAFTWERK Group AG
export@kraftwerktools.com

Art. 903.054.006

Your specialized dealer: