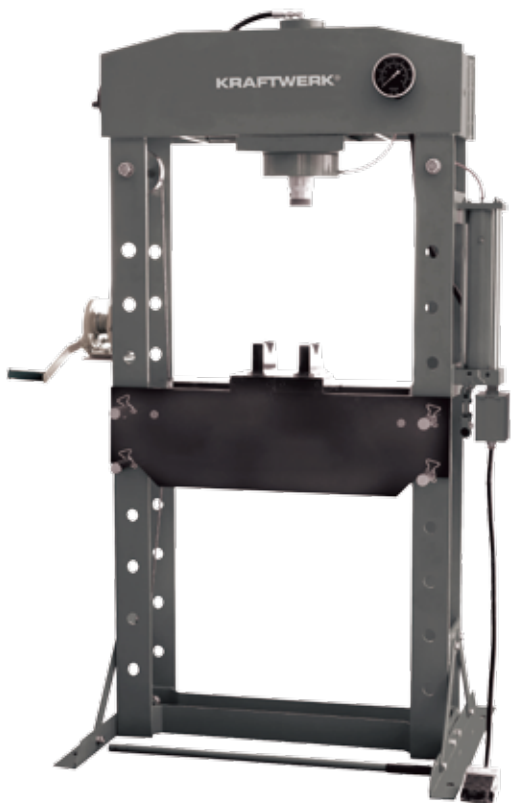


Instruction Manual

Hydropneumatic shop press

50 T



Art. 38123



Please read these instructions carefully to ensure the safe and effective use of this tool.

Download Bedienungsanleitung / Téléchargement du mode d'emploi / Instructions download
Descarga de la instrucción de uso / Download de instruções de operação / Download del manuale



SAFETY INSTRUCTIONS

PLEASE READ THESE INSTRUCTIONS CAREFULLY. NOTE THE SAFETY INSTRUCTIONS AND WARNINGS. USE THE PRODUCT CORRECTLY AND WITH CARE FOR THE PURPOSE OF WHICH IT IS INTENDED. FAILURE TO DO SO MAY CAUSE DAMAGE TO PROPERTY AND/OR SERIOUS PERSONAL INJURY.

PLEASE KEEP THIS INSTRUCTION MANUAL SAFE FOR FUTURE USE.

We've done all we can to assure this press offers the outmost in safety, but you have to do your part. No amount of warning can take the place of your good judgment, so make sure it's the first thing you bring to any job. Beyond that here are some obvious tips:

- Steel and others materials can shatter, so always use protective eye-wear that complies with the appropriate ANSI code.
- If you detect anything that may indicate imminent structural failure, stop using the press immediately and inspect it thoroughly.
- Bolt the press to the floor if it is to be used on bulky or unstable items.
- Do not use press to compress springs or any other item that could disengage and cause a potential hazard.
- Use a qualified person to maintain the press in good condition. Keep it clean for best and safest performance.
- Do not exceed the rated capacity. Never apply excessive force to a workpiece and always use the pressure gauge to accurately determine the applied load.
- Use this press for the purpose for which it is intended. DO NOT use it for any other purpose it is not designed to perform.
- Keep children and unauthorized persons away from the work area.
- Remove ill fitting clothing. Remove ties, watches, rings and other loose jewelry and contain long hair.
- Wear ANSI approved impact safety goggles, full-face impact safety shield and heavy-duty work gloves when operating the press.
- Keep proper balance and footing, do not over-reach and wear nonskid footwear.
- Only use this press on a surface that is stable, level, dry and not slippery, and capable of sustaining the load. Keep the surface clean, tidy and free from unrelated materials and ensure that there is adequate lighting.
- Inspect the press before each use. DO NOT use if bent, broken, cracked, leaking or otherwise damaged.
- Check to ensure that all applicable bolts and nuts are firmly tightened.
- Ensure that workpiece is center-loaded and secure.
- Keep hands and feet away from bed area at all times.
- Never stand directly in front of loaded press and never leave loaded press unattended.
- DO NOT operate the press when you are tired or under the influence of alcohol, drugs or any intoxicating medication.
- DO NOT allow untrained persons to operate the press.
- DO NOT make any modifications to the press.
- DO NOT use brake fluid or any other improper fluid and avoid mixing different types of oil when adding hydraulic oil. Only good quality hydraulic oil can be used.
- DO NOT expose the press to rain or any other kind of bad weather.
- If the press needs repairing and/or there are any parts that need to be replaced, have it repaired by authorized technicians and only use the replacement parts supplied by the manufacturer.

WARNING! The warnings, cautions and instructions discussed in this manual cannot cover all conditions and situations that may occur. It must be understood by the operator that common sense and caution are factors which cannot be built into this product, but must be supplied by the operator.

BEFORE FIRST USE

- a) Before first use of this product, purge away air from the hydraulic system: open the release valve by turning it counterclockwise. Pump several full strokes to eliminate any air in the system.
- b) Check all parts and conditions, if there is any part broken, stop using it and contact your supplier immediately.
- c) If under plate (16) is not in the centre, loose the screw (43) slightly, then slide the under plate to the position you need and tighten the screw.

OPERATIONG INSTRUCTIONS

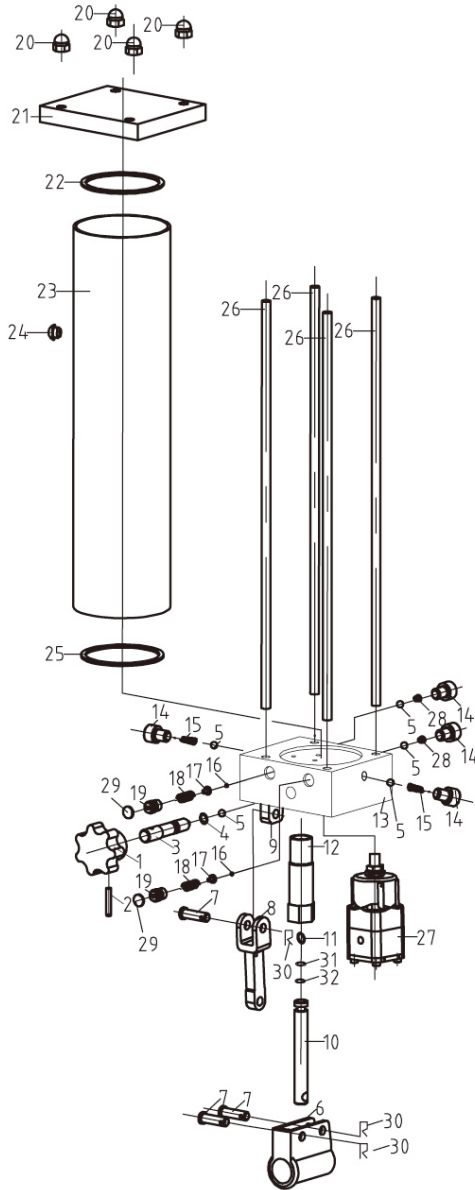
WARNING! ENSURE THAT YOU READ, UNDERSTAND AND APPLY THE SAFETY INSTRUCTIONS AND WARNINGS BEFORE USE.

- Place the heel block on bed frame, then insert workpiece onto the heel block.
- Connect the air inlet fitting into the shop air supply hose lock fitting, turn on the air valve (pedal) to let the pump work until the ram nears to the workpiece, then turn off the air valve (pedal). When air source is unavaliable, use the handle to pump.
- Align workpiece and ram to ensure center-loading.
- Turn on air valve (pedal) (or pump the handle) to apply load onto workpiece.
- When work is done, turn off the air valve (pedal) (or stop pumping handle), slowly and carefully remove loadfrom workpiece by turning the release valve conterclockwise in small increments.
- Once ram has fully retracted, remove workpiece from bed frame.
- Disconnect the air inlet fitting from the air source.

MAINTENANCE

- Clean the outside of the press with dry, clean and soft cloth and periodically lubricate the joints and all moving parts with a light oil as needed.
- When not in use, store the press in a dry location with ram and piston fully retracted.
- When press efficiency drops, purge always air from hydraulic system as described before.
- Check the hydraulic oil; remove the oil filler nut on the top of the reservoir, if the oil is not adequate, fill with high quality hydraulic jack oil as necessary, then replace the oil filler nut, purge away air from the hydraulic system.

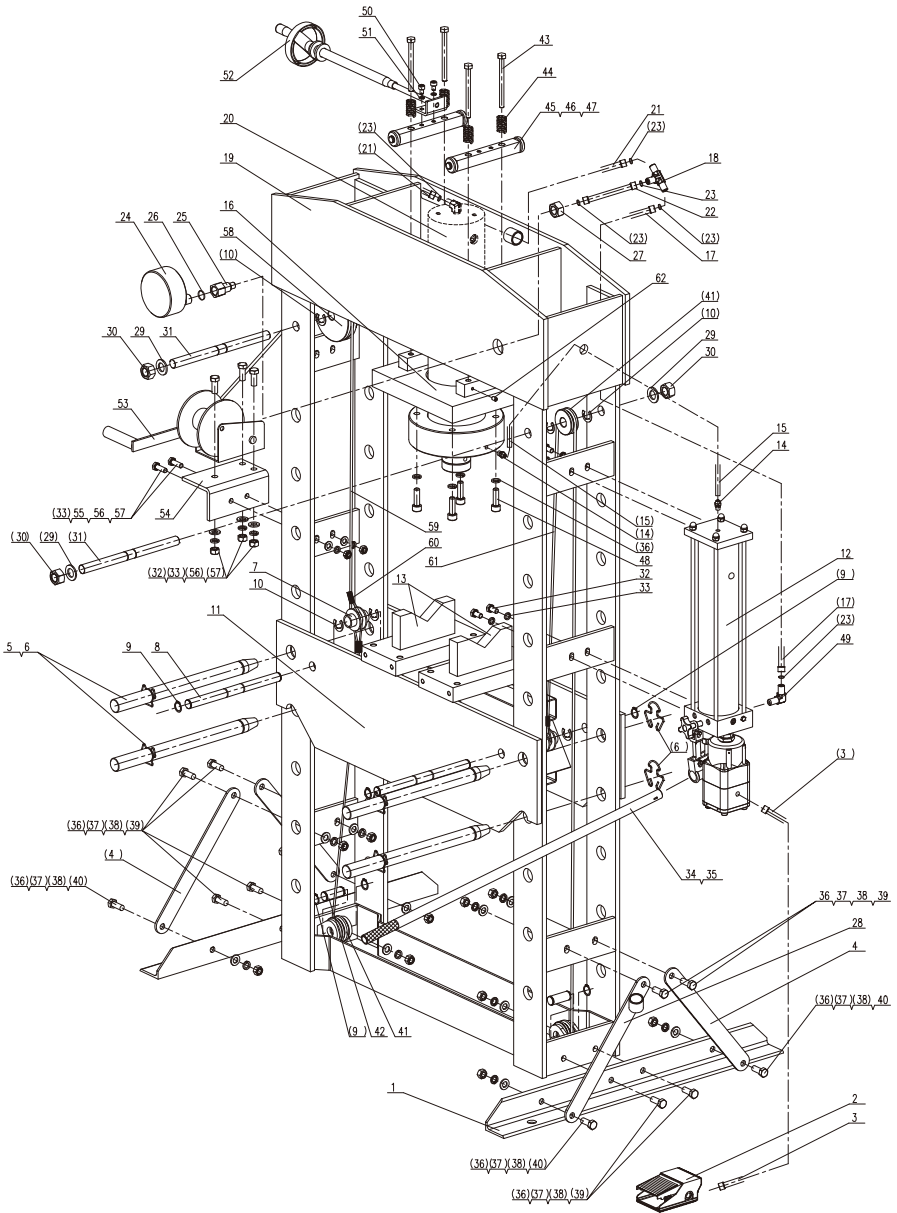
PART LIST
SHOP PRESS PUMP PARTS LIST



No.	Description	QTY
01	Knob	1
02	Pin 5X24	1
03	Release valve	1
04	O-Ring	1
05	Barl valve	5
06	Handle bracket	1
07	Pin	3
08	Joint pole	1
09	Pole seat	1
10	Piston	1
11	J-ring	1
12	Pump housing	1
13	Base	1
14	Bolt M8X12	4
15	Spring	2
16	Ball valve	2
17	Ball seat	2
18	Spring safety valve	2
19	Screw safety	2
20	Nut M8	4
21	Cover	1
22	O-Ring	1
23	Reservoir	1
24	Oil gasket	1
25	O-Ring	1
26	Stay bar	4
27	Air pump	1
28	Spring	2
29	Onnet	2
30	Bolt	3
31	O-Ring	1
32	Washer	1

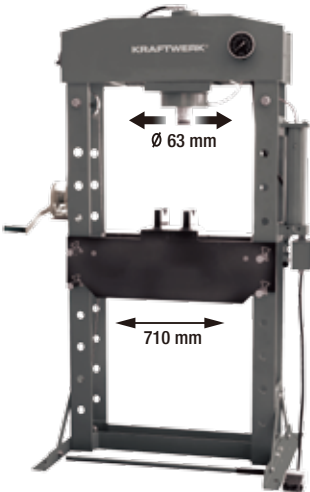
PART LIST

Use the exploded drawing as your guide to assemble. Lay all parts and assemblies out in front of you before beginning.



No.	Description	QTY	No.	Description	QTY	No.	Description	QTY	No.	Description	QTY
01	Base support	1	17	Connector pipe	1	33	Washer 10	9	49	Straight connector	1
02	Foot pedal air on/off	2	18	Connector	1	34	Handle	1	50	Nut bolt M8x12	2
03	Air pipe	2	19	Upper frame	1	35	Handle sleeve	1	51	Washer 8	2
04	Support beam A	1	20	Press cylinder	1	36	Washer 12	16	52	Screw	1
05	Bed frame pin	1	21	Cylinder pipe	1	37	Flat washer 12	12	53	Steel wire winch	1
06	Butterfly washer	8	22	Pressure gauge oil pipe	1	38	Nut M12	12	54	Cury board	1
07	Wire fix base	8	23	O-ring 5x1.8	6	39	Nut bolt M12x35	8	55	Nut bolt M10x30	2
08	Connection bar	2	24	Pressure gauge	1	40	Nut bolt M12x30	4	56	Flat washer 10	5
09	Washer 20	2	25	Pressure gauge connector	1	41	Roller	3	57	Nut M10	5
10	Washer 19	8	26	O square ring	1	42	Short roller shaft	2	58	Big roller	1
11	Bed frame	4	27	Hex nut M20x2	1	43	Nut bolt M12x120	4	59	Steel wire 1	1
12	Hydraulic pressure unit	4	28	Support beam B	1	44	Spring	4	60	Clamp	3
13	Press block set	1	29	Flat washer 20	4	45	Roller shaft	2	61	Steel wire 2	1
14	Plastic Pipe	1	30	Nut M20	4	46	Bearing 6202-2Z	4	62	Fastness bolt M6x10	4
15	Plastic Pipe Connector	2	31	Axle	2	47	Washer 15	4			
16	Under plate	1	32	Nut bolt M10x25	7	48	Nut bolt M12x40	4			

PRODUCT DESCRIPTION



- Lateral movable cylinder with bearing (moving range: 260 mm)
- Pressure gauge with integrated housing
- Including par of V-blocks
- With winch for lifting and lowering of the bed frame

Capacity: 50 t
 Stroke: 200 mm
 Work range: 888 mm
 Work width: 710 mm
 Stamp-Ø: 63 mm
 Product size: 1310 x 800 x 1940 mm
 Net weight: 293 kgs

DECLARATION OF CONFORMITY

Model: **38123**

Hydropneumatic shop press 50 T

KRAFTWERK Sàrl, 25 rue due Stade, F-67870 Bischoffsheim

Declares under sole responsibility that the product to which this declaration relates is in conformity with the following standard(s) or other normative document(s):

EN 1494: 2000+A1/2008

EN ISO 12100: 2010

EN ISO 13857: 2008

EN 349: 1993+A1/2008

Following the provisions of Directive(s)

Machinery Directive:

2006/42/EC

Bischoffsheim, 01/07/2016



Patrick Wyss
President

WARRANTY

We do not take responsibility for any damage caused by misuse or any use that is not in compliance with the safety standards described herein.

Customer services

Contact your local importer of your specialized dealer to obtain address of your service department.

You find our partners under **www.KRAFTWERKtools.com**



From date of purchase receipt
2 YEARS GUARANTEE
on material- or production-defects



KRAFTWERK Europe AG
Mettlenbachstrasse 23
CH-8617 Mönchaltorf
Switzerland

Tel. +41-44 949 40 50

KRAFTWERK Sàrl.
25, rue du Stade
F – 67870 Bischoffsheim
France

Tel. +33-388 48 64 50

www.KRAFTWERKtools.com