

Operating and Maintenance Instructions

Hydraulic Floor Transmission Jack

EN

 **1.5T**



Art. 38115



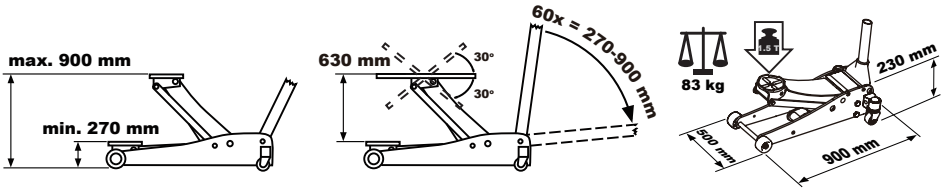
www.KRAFTWERK.eu



IMPORTANT

Before using this jack, study this operation manual carefully!

SPECIFICATIONS



SAFETY PRECAUTIONS

- Read and understand all operating instructions before use.
- The vehicle must be properly supported and blocked before starting any repairs.
- Use a transmission jack of the proper size and capacity to handle the anticipated load. This jack is rated for a maximum load of one and one-half (1.5) ton. Do not overload beyond the jack's rated capacity. Overloading may cause damage to or failure of the jack.
- Keep hands, fingers and arms away from moving parts of the jack at all times.
- Secure the load with the safety chain before lowering or moving the load.
- Lower the load slowly and avoid sudden starts or stops that may cause the load to shift.
- This jack is designed for use on hard, level surfaces capable of sustaining the load. Use on any other surface can result in jack instability and possible loss of load.
- Do not use the transmission jack if under the influence of drugs or alcohol.
- This transmission jack is designed and intended for use by properly trained and experienced personnel only. If you are not familiar with the proper and safe operation of a transmission jack, do not use until proper training and knowledge have been obtained.
- The use of this jack is limited to the removal, installation and transportation in the lowered position of transmission and differentials. Transfer the load immediately to appropriate transmission stand or work station.
- Owners and/or operators should be aware that repair of the equipment requires specialized knowledge and facilities. Only factory authorized parts, labels and decals shall be used on this equipment. Contact customer service department.
- Because of potential hazards associated with the misuses of equipment of this type, no alterations shall be made to the product without written authorization of KRAFTWERK as manufacturer and supplier.
- Failure to comply with all of these warnings may cause loss of load, damage to the jack and/or failure of the jack resulting in serious personal injury and/or property damage.

OPERATING INSTRUCTIONS

The owner and/or operator is responsible for providing maintenance, maintaining all decals or warning labels and while in use, maintaining the unit in good work order. If the owner and/or operator is not fluent in English, the product warnings and instructions shall be read and discussed with the operator in the operator's native language by the purchaser/owner or his designee. The jack shall be inspected per the instruction manual prior to use.

It is the owner and/or operators responsibility to study all WARNINGS on the product label and the operating and maintenance instructions prior to operation of this unit. The owner/operator shall retain the product instructions for future reference.

All numbers in parentheses () refer to the index number from the parts breakdown.

1. Move the jack into position.
2. Turn the knob clockwise fully to close the valve.
3. Move the pump lever up and down to raise the saddle.
4. Adjust the angle screws to align with the shape of the transmission.
5. Adjust the angle brackets and the chain to secure the transmission on the saddle.
6. Remove the transmission from the vehicle.
7. Turn the knob counterclockwise slowly to lower the saddle. Always lower the saddle SLOWLY. Always transport the load in the lowered position with the chains securely fastened.
8. Reverse this procedure when mounting the transmission.

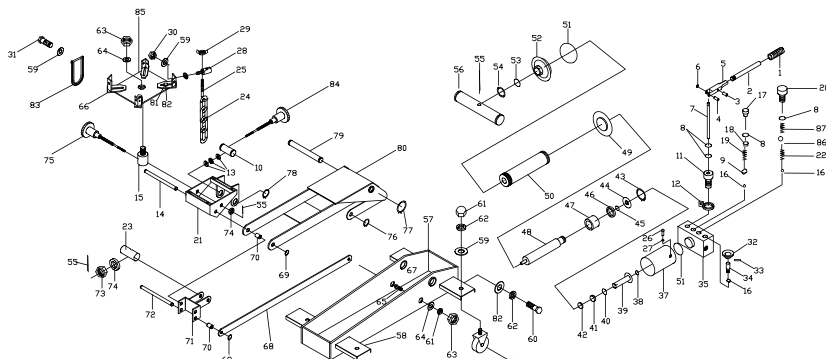
MAINTENANCE

1. The hydraulic cylinder assembly contains hydraulic fluid that must be kept at approximately 80% of full at all times for proper operation. To check the level and to fill, remove screw (26).
2. Fill with clean hydraulic fluid only.
3. Replace the screw.

LUBRICATION

1. Lubricate the shaft threads of the angle screw assembly with #2 tube grease when necessary.
2. Lubricate grease fitting once every three months, depending on usage, with #2 tube grease.

PARTS LIST



Index	Art.	Description	mm	pcs
1	38115-01	Handle Grip		1
2	38115-02	Pump Handle		1
3	38115-03	Pin	10x30	1
4	38115-04	Pin	10x30	1
5	38115-05	Socket		1
6	38115-06	Snap Ring	9	1
7	38115-07	Plunger		1
8	38115-08	O-Ring	16x2.4	4
9	38115-09	Ball base		1
10	38115-10	Guide Role	14x2.65	1
11	38115-11	Pump		1
12	38115-12	Pump seat		1
13	38115-13	Thrust Bearing		1
14	38115-14	Pin		1
15	38115-15	Connect or screw		1
16	38115-16	Ball	6	2
17	38115-17	Screw	15.8x14.5	1
18	38115-18	Adjusting screw	12x1.5	2
19	38115-19	Adjusting spring		1
20	38115-20	Screw	15.8x3.5	1
21	38115-21	Saddle base		1
22	38115-22	Spring		1

Index	Art.	Description	mm	pcs
23	38115-23	Connecting pin	25	1
24	38115-24	Chain	5	2
25	38115-25	Chain hook	8	2
26	38115-26	Screw	M10x1	2
27	38115-27	O-ring	19x2	2
28	38115-28	Hook Guide	10	2
29	38115-29	Nut	M8	2
30	38115-30	Nut	M10	4
31	38115-31	Chain connector	10	2
32	38115-32	Release knob		1
33	38115-33	Pin	4x20	1
34	38115-34	Release rod	12x64	1
35	38115-35	Valve Block Assembly		1
36	38115-36	Caster Assembly		4
37	38115-37	Reservoir		1
38	38115-38	O-ring	19x2.65	1
39	38115-39	Ram Assembly		1
40	38115-40	Retaining Ring	27x1.25	1
41	38115-41	O-ring	28x3	1
42	38115-42	Y-ring	30x6.3	1
43	38115-43	Retaining Ring	32	1
44	38115-44	Washer	38x1.5	1

Index	Art.	Description	mm	pcs
45	38115-45	O-ring	33.2x4.6	1
46	38115-46	Retaining O-ring	42x6	1
47	38115-47	Washer	42x20	1
48	38115-48	Piston Rod		1
49	38115-49	O-ring	50.5x2.4	1
50	38115-50	Cylinder		1
51	38115-51	Seal Ring	76x2	2
52	38115-52	Cylinder Nut		1
53	38115-53	O-ring	37.5x3.55	1
54	38115-54	Wiper	46x6	1
55	38115-55	Split pin		3
56	38115-56	Link Rod		1
57	38115-57	Base		1
58	38115-58	Spring		1
59	38115-59	Washer	12	12
60	38115-60	Screw	M12x25	2
61	38115-61	Nut	12	4
62	38115-62	Lock washer	12	6
63	38115-63	Nut	16	3
64	38115-64	Washer	14	3
65	38115-65	Screw	M16	2
66	38115-66	Containing Angle		4

Index	Art.	Description	mm	pcs	
67	38115-67	Lock washer	16	2	
68	38115-68	Long link rod		2	
69	38115-69	Snap Ring	16	4	
70	38115-70	Spacer		16	4
71	38115-71	Connector		1	
72	38115-72	Shaft arm		1	
73	38115-73	Nut	M16	1	
74	38115-74	Spacer	12	2	
75	38115-75	Adjusting Screw	M16x250	1	
76	38115-76	Snap Ring	20	2	
77	38115-77	Snap Ring	25	2	
78	38115-78	Snap Ring	28	2	
79	38115-79	Shaft arm	25	1	
80	38115-80	Lifting Arm Assembly		1	
81	38115-81	Screw	M12x20	4	
82	38115-82	Lock washer	12	6	
83	38115-83	Chain connector		2	
84	38115-84	Adjusting Screw	M16x280	1	
85	38115-85	Saddle		1	
86	38115-86	Ball	9	1	

CUSTOMER SERVICES

Contact your local importer or your specialized dealer to obtain address of the next service department. You find our partners under

www.KRAFTWERK.eu

GUARANTEE

From date of purchase receipt
2 YEARS GUARANTEE
 on material- or production-defects

© KRAFTWERK Europe AG

www.kraftwerk.eu

DECLARATION OF CONFORMITY

Model: 38115 **Hydraulic Floor Transmission Jack**

KRAFTWERK Sàrl, 25 rue due Stade, F-67870 Bischoffsheim

declares under sole responsibility that the product to which this declaration relates is in conformity with following the provisions of Directive(s):

Machinery Directive: **2006/42/EC**

Bischoffsheim, 28/02/2013

P. Wyss

Patrick Wyss
 President