

# KRAFTWERK®

FAVORITE TOOLS SINCE 1979

## Instruction Manual Inner tie rod tool set

Art. 30215

EN



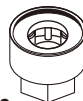
The tool set allows a quick and easy removal and replacement of the inner steering ball joint without the need to dismantle the steering rack from the bulkhead.



**NO.1**  
Drive head range:  
Ø 30-35 mm

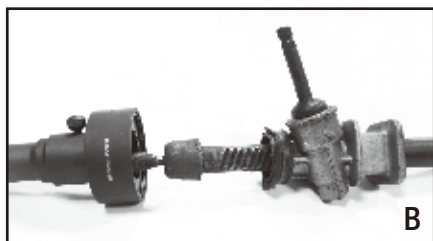
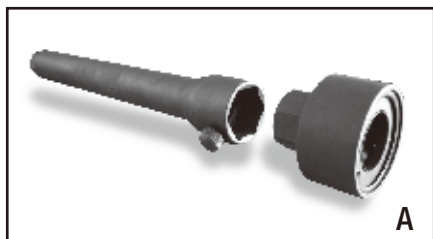
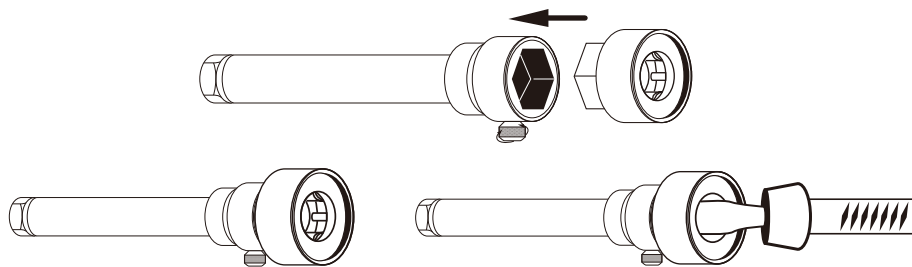


**NO.2**  
Drive head range:  
Ø 35-40 mm



**NO.3**  
Drive head range:  
Ø 40-45 mm

Fit the appropriate locking tool to the exposed using the special socket under the ball joint of the rack steering rack simultaneous locking the rack using the chosen locking tool. After the removal of the ball joint it is now possible to replace the sealing ring in rack housing.



#### **WARRANTY**

We do not take responsibility for any damage caused by misuse or any use that is not in compliance with the safety standards described here.

#### **CUSTOMER SERVICES**

Contact your local importer or your specialized dealer to obtain address of our service department.

---

**FROM DATE OF PURCHASE RECEIPT  
2 YEAR GUARANTEE  
ON MATERIAL OR PRODUCTION DEFECTS**